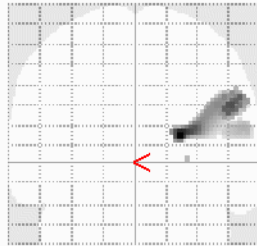
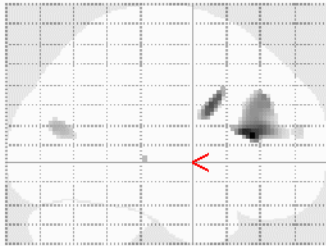
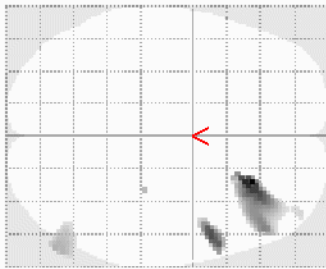


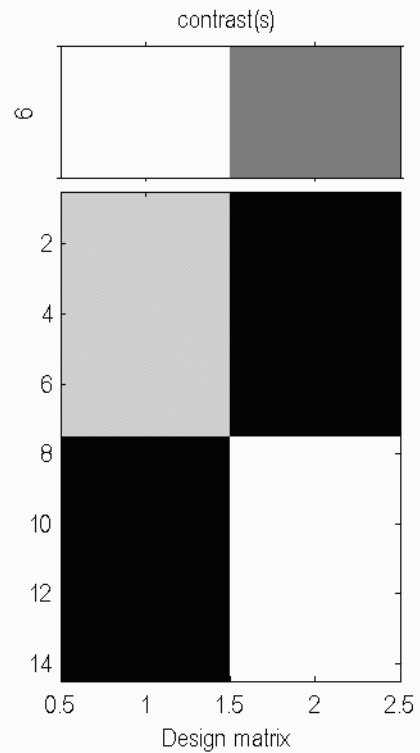
F [1 0]



SPM_{mip}
[0, 0, 0]



SPM{F_{1,12}}



SPMresults: .\MATLAB\con pa low
Height threshold F = 57.682097 [p<0.05 (FWE)]
Extent threshold k = 0 voxels

Statistics: p-values adjusted for search volume

set-level		cluster-level				peak-level					mm mm mm		
ρ	c	$\rho_{\text{FWE-corr}}$	$q_{\text{FDR-corr}}$	k_E	ρ_{uncorr}	$\rho_{\text{FWE-corr}}$	$q_{\text{FDR-corr}}$	F	(Z _≡)	ρ_{uncorr}			
0.000	5			402		0.005	0.506	103.58	4.99	0.000	24	32	14
						0.018	0.554	75.90	4.66	0.000	48	38	34
						0.029	0.666	67.26	4.53	0.000	22	22	18
				65		0.011	0.506	86.10	4.80	0.000	52	10	30
				99		0.029	0.666	66.80	4.53	0.000	58	-74	18
				1		0.031	0.666	65.64	4.51	0.000	28	-26	2
				7		0.044	0.878	59.76	4.40	0.000	40	58	16

table shows 3 local maxima more than 8.0mm apart

Height threshold: F = 57.68, p = 0.000 (0.050)
Extent threshold: k = 0 voxels, p = 1.000 (0.050)
Expected voxels per cluster, <k> = 27.238
Expected number of clusters, <c> = 0.05
FWEp: 57.682, FDRp: Inf

Degrees of freedom = [1.0, 12.0]
FWHM = 29.431.8 27.8 mm mm mm; 14.7 15.9 13.9 (voxels)
Volume: 1450600 = 181325 voxels = 50.5 resels
Voxel size: 2.0 2.0 2.0 mm mm mm; (resel = 3258.49 voxels)